



# Universe in the Classroom

The Cardiff School of Physics and Astronomy is reaching out to primary schools and communities across Wales, using the wonders of the Universe to spark a passion for science in the nations young children!



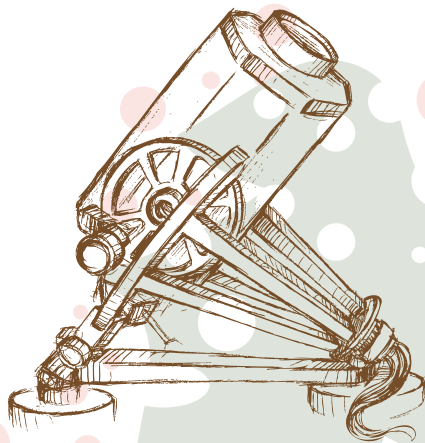
## What is Universe in the Classroom?

Universe in the Classroom is providing improved teaching methods and innovative tools to enhance the way STEM subjects are taught in welsh primary schools.

The programme is running training events to teach over 100 welsh primary school teachers how to use the new resources, which include a brand new 0.4-metre robotic telescope, Universe-in-a-Box toolkits and dozens of enquiry-based learning activities.

### Universe in a Box

Universe in a Box is an educational toolkit designed to bring astronomy and space sciences to 4-11 year old children. It provides teachers and educators with over 40 practical activities, as well as the materials and models required to do them.



### 0.4-metre Telescope

Together with the Las Cumbres Observatory we are building a robotically controlled 0.4-m telescope for use exclusively by welsh school children, allowing them to pursue their own science investigations using professional-quality equipment!



## Stellar Role Model Scheme

To carry out this ambitious project Universe in the Classroom has recruited a diverse team of enthusiastic science undergraduates and post-graduates to act as Stellar Role Models (STARS) who will demonstrate that science is for everyone.



## Fast Facts

- ☆ 100 welsh primary schools
- ☆ 100 Universe-in-a-Box toolkits
- ☆ STEM training for primary school teachers
- ☆ 0.4-metre robotic telescope
- ☆ STARS role model scheme
- ☆ Astronomy workshops for schools
- ☆ 60,000 primary school students in 10 years

## How were schools selected?



Membership of Universe in the Classroom is free of charge to any welsh primary school, thanks to support from the Welsh Government National Science Academy. However, due to limited resources, underserved schools have been prioritised based on the following criteria:

- ☆ Schools with the highest percentage of pupils entitled free school meals,
- ☆ Schools in regions with highest percentage of unsatisfactory ratings,
- ☆ Welsh Medium schools,
- ☆ Schools with the lowest annual budget per student.

